

Blanket

ISSUE
25

THE CELEBRATION
ISSUE



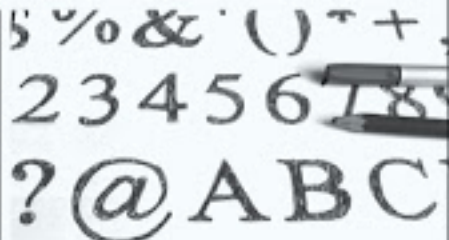
HAND TIMES

THIS ISSUE'S BLANKET FEATURED FONT IS BY MANUEL VIERGUTZ (EM-VEM), A GRAPHIC DESIGN STUDENT LIVING IN GERMANY (NEAR STUTTGART). AS PART OF A SCHOOL PROJECT, HE WAS SET A CREATIVE BRIEF TO DESIGN A TYPEFACE THAT WOULD SUIT AN IMAGINARY SKATEBOARD MAGAZINE.

Manuel has always enjoyed creating his own fonts (you may remember we featured his previous font 'Heavy Lead Edge' in issue 110), so he jumped at the opportunity to create a specific typeface for this project.

Firstly, he considered the look and feel he wanted to create for the magazine. "I wanted a rough, dirty and handmade style".

Another consideration was to use a typeface that would work specifically as a headline font.



A B C D E F G H I J K L M N O P Q R S T U V W X Y Z
a b c d e f g h i j k l m n o p q r s t u v w x y z 1 2 3 4 5 6 7 8 9 0

As a display font, it also needed to be clear and legible. "I could have picked a free font on dafont.com, but that is time-consuming (in search) and boring".

Manuel decided instead to adapt an existing typeface to create the specific font he was seeking. First, he chose the typeface Times New Roman as his base font. "Many people say the font is outdated and that it is old and no longer usable.

I thought what if you jimp the font with 'modern' design elements?"

The 'modern' design elements were added by Manuel using a pencil and fine lines. The result was a font that mixes the classic and masculine elements of the Times New Roman font with a more textured and 'handmade' feel. As a nod to both of these influences, Manuel has aptly called his font 'Hand Times'.



www.em-vem.blogspot.com

DID YOU KNOW? A brief history of the Times New Roman font

IT PAYS TO SPEAK UP!

After publicly criticizing The Times newspaper for the poor quality of its printing, typographer and designer Stanley Morison was commissioned by the newspaper to produce a new typeface for the publication.

TIMES NEW ROMAN MOVES WITH THE TIMES

Since 1901 there have been several adaptations of the original Times New Roman font. The original was used by the London newspaper The Times from 1902-1972. However, in 1972 it was replaced by the 'bigger' Times

Europa. Ten years later, in 1982, Times Europa was replaced by Times Roman, which was followed by Times Millennium in 1991. The misleading name (or maybe more hopefully) of Times Classic first appeared in 2001. This version of Times New Roman was designed to be more economical.

Initially, Times Classic was only used until 2006 when Times Modern was unveiled. This version was designed by Neville Brody (former art director of The Face) and the team at Research Studio, so one can assume there was nothing economical with this font!

IT WAS ONE OF THE MOST USED TYPEFACES IN THE WORLD!

Since the early 1990's, Microsoft distributed Times New Roman with every copy of Microsoft Windows. It was used as a default typeface in web browsers and word documents making it one of the world's most used fonts. All that changed when Microsoft launched Office 2007 and Times New Roman was replaced as the default font by the new font on the block, a font called 'Calibri'.